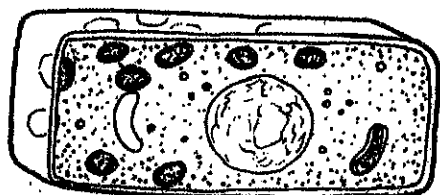


Name: _____ Date: _____

Cell Matching

Directions: Place the letter of the correct definition on the blank next to the corresponding term. Use the information from The Cell chartlet, the Internet, or other resource materials.

- | | |
|--|--|
| <p><u>I</u> 1. cell membrane</p> <p><u>C</u> 2. cells</p> <p><u>K</u> 3. cell wall</p> <p><u>P</u> 4. chlorophyll</p> <p><u>H</u> 5. chloroplast</p> <p><u>A</u> 6. cytosol (cytoplasm)</p> <p><u>O</u> 7. endoplasmic reticulum (ER)</p> <p><u>J</u> 8. eukaryotic cells</p> <p><u>E</u> 9. Golgi apparatus</p> <p><u>G</u> 10. mitochondria</p> <p><u>L</u> 11. muscle cells</p> <p><u>B</u> 12. neurons/nerve</p> <p><u>F</u> 13. nuclear membrane</p> <p><u>I</u> 14. nucleolus</p> <p><u>N</u> 15. nucleus</p> <p><u>M</u> 16. organelles</p> <p><u>Q</u> 17. prokaryotic cells</p> <p><u>R</u> 18. ribosomes</p> <p><u>S</u> 19. smooth endoplasmic reticulum</p> <p><u>D</u> 20. vacuoles</p> | <p>A. jellylike fluid that flows around inside the cell and contains organelles</p> <p>B. cells in animals that transmit messages throughout the organism</p> <p>C. the basic building blocks of living organisms</p> <p>D. storage areas in the cell</p> <p>E. a network of cytoplasmic fibers, rods, and granules that can collect proteins and secrete them <u>outside the cell (export)</u></p> <p>F. membrane that separates the nucleus from the rest of the cell</p> <p>G. organelles that break down substances to produce energy for the cell</p> <p>H. an organelle in a plant cell that catches the energy in sunlight so the cell can make its own food</p> <p>I. a round "blob" inside the nucleus that makes ribosomes</p> <p>J. cells that have nuclei; plant and animal cells</p> <p>K. a rigid covering of a plant cell made of cellulose</p> <p>L. long, thin cells in animals that can contract and cause movement</p> <p>M. tiny structures inside the cell that each perform specific jobs for the cell</p> <p>N. the cell's control center, which contains the DNA, controls the organelles, and issues instructions for the cell's activities</p> <p>O. a system of double membranes on which chemical reactions take place / <u>Transports molecules</u></p> <p>P. a green pigment in chloroplasts that traps the energy in sunlight</p> <p>Q. cells that do not have nuclei or mitochondria; bacteria and other microorganisms</p> <p>R. small organelles that make proteins; they may be attached to the rough ER or float in the cytoplasm</p> <p>S. system of double membranes that make lipids (fat molecules)</p> <p>T. a thin covering that separates the cell from the outside environment; materials pass into and out of the cell through tiny pores</p> |
|--|--|

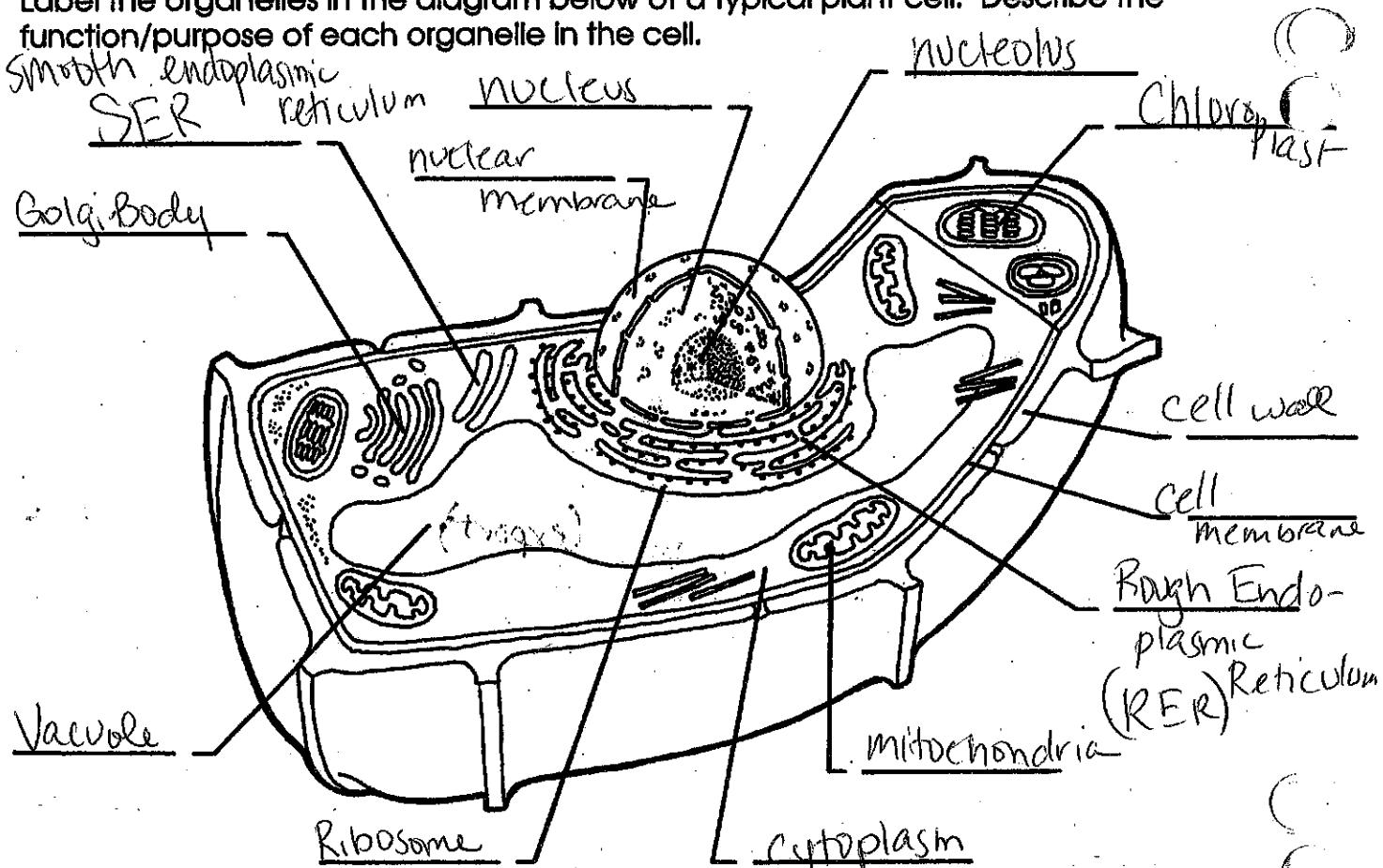


plant cell

PLANT CELLS

Name _____

Label the organelles in the diagram below of a typical plant cell. Describe the function/purpose of each organelle in the cell.



Label the organelles in the diagram below of a typical animal cell. Describe the function/purpose of each organelle in the cell.

